

# accommodation



## STANDARD ROOMS

### Courtyard standard rooms

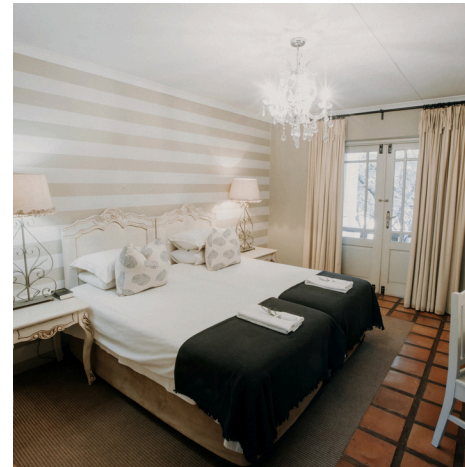
- Rooms 1 to 3 and 5 to 10
- Two single beds
- Bathroom with shower
- Private veranda
- Fan | heater
- Coffee and tea station
- Amenities and towels
- DSTV limited channels

**R 850 pp sharing | R 1050 pp single | R 425 per child**

### Outside courtyard standard rooms

- Standard rooms 19 to 29 - converted king bed
- Two single beds per request*
- Bathroom with shower
- Private veranda
- Air conditioning
- Coffee and tea station
- Amenities and towels
- DSTV limited channels

**R 1050 pp sharing | R 1250 pp single R 525 per child**



### Stables standard rooms

- Standard rooms 31 to 37 and 40 to 43
- One double bed and one single bed
- Bathroom with shower
- Air conditioning
- Coffee and tea station
- Amenities and towels
- DSTV limited channels

**R 1050 pp sharing | R 1250 pp single R 525 per child**

# accommodation



## LUXURY ROOMS

### Outside courtyard luxury rooms

- Luxury rooms 14 to 18
- Double bed
- Open plan bathroom with spa bath
- Private veranda
- Air conditioning | Fireplace
- Coffee and tea station | Mini fridge
- Amenities and towels
- DSTV limited channels

**R 1150 pp sharing | R 1350 pp single R 575 per child**

### Courtyard luxury room

- Luxury room 4
- One double bed
- Open plan bathroom with a french bath
- Private veranda
- Air conditioning
- Coffee and tea station | | Mini fridge
- Amenities and towels
- DSTV limited channels

**R 1100 pp sharing | R 1300 pp single | R 550 per child**



# accommodation



## FAMILY ROOMS

### Courtyard standard rooms

Room 1 interleafing with room 2 | Room 5 interleafing with room 6  
Two single beds and one double bed  
Bathroom with shower  
Private veranda  
Fan | heater  
Coffee and tea station  
Amenities and towels  
DSTV limited channels

Room 11  
Two single beds and one bunk bed  
Bathroom with shower  
Fan | heater  
Coffee and tea station  
Amenities and towels  
DSTV limited channels

**R 850 pp sharing | R 1050 pp single R 425 per child**

### Courtyard standard room

Room 3 interleafing with luxury room 4  
Two single beds  
Bathroom with shower  
Private veranda  
Fan | heater  
Coffee and tea station  
Amenities and towels  
DSTV limited channels

**R 850 pp sharing | R 1050 pp single R 425 per child**



### Courtyard luxury room

Luxury room 4  
One double bed  
Open plan bathroom with french bath  
Air conditioning  
Private veranda  
Coffee and tea station | Mini fridge  
Amenities and towels  
DSTV limited channels

**R 1100 pp sharing | R 1300 pp single R 550 per child**

### Kindly note:

Bookings are on a first come first serve basis  
Bookings must be made via email  
Check-in times are from 13h00 – 17h00  
A refundable cash key deposit of R 100 is required upon check-in  
All accommodation includes breakfast served from 08h00 – 10h00  
Check-out times are from 08h00 – 10h00  
Children aged 3 to 11 years qualify for child rates

# terms and conditions

## GENERAL TERMS AND CONDITIONS

- The Stables standard rooms are in close proximity of our Stables Venue and will be subject to the function's noise levels. All accommodation booked will be done at your own risk.
- We are unfortunately not wheelchair friendly.
- All photos shown are for illustration purposes only. All rooms have been decorated individually and decor may vary.
- Rates quoted are valid until December 2027 and includes 15% VAT.
- Rates quoted are per person per night and includes breakfast the following morning.
- Green Leaves will require a R 100-00 cash key deposit upon check-in and will be refunded upon check-out. Lost keys will result in forfeiting the key deposit.
- Bookings are on a 'first come first serve' basis.
- A 50% deposit is required within 48 hours of receiving the booking confirmation. The balance will be due 14 days prior to the check-in date. Bookings are only confirmed once the deposit has been received in full and proof of payment has been received.
- Check in time is 13h00 for all the guests. Early check-in's will not be permitted.
- Check out time is 10h00 on the morning of departure.
- Children under the age of 3 years will stay complimentary when sharing a room with adults.
- Children from the ages of 3 up to 11 years will be charged at 50% of the adult rate.
- The number of children per room will be to the discretion of the Green Leaves Reservations Department.
- Green Leaves regrettably does not offer any activities for children, nor do we offer childminding facilities.
- Kindly note that pets are not allowed on our property.
- Green Leaves accommodation is strictly reserved for guests attending a function on the premises.
- You, the guest, will be held responsible for any loss of items in your room or any damage inflicted to Green Leaves property.
- Should you no longer be able to attend the function or in the event that the function has been cancelled, the accommodation will not be transferable to another date. The accommodation cancellation policy will apply.
- The accommodation cancellation policy is as follows:
  - Less than 14 days, forfeit all monies paid up to date.
  - From 15 to 21 days, forfeit 50% of the room total.
  - From 22 to 35 days, forfeit 37.5% of the room total.
  - From 36 to 50 days, forfeit 25% of the room total.
  - More than 51 days, forfeit 12.5% of the room total.
- Should we not receive the payments as per the payment requirements, Green Leaves reserves the full right to cancel the booking without any liability, after giving the client written notice.
- Please note that all cancellations must be made in writing via email.